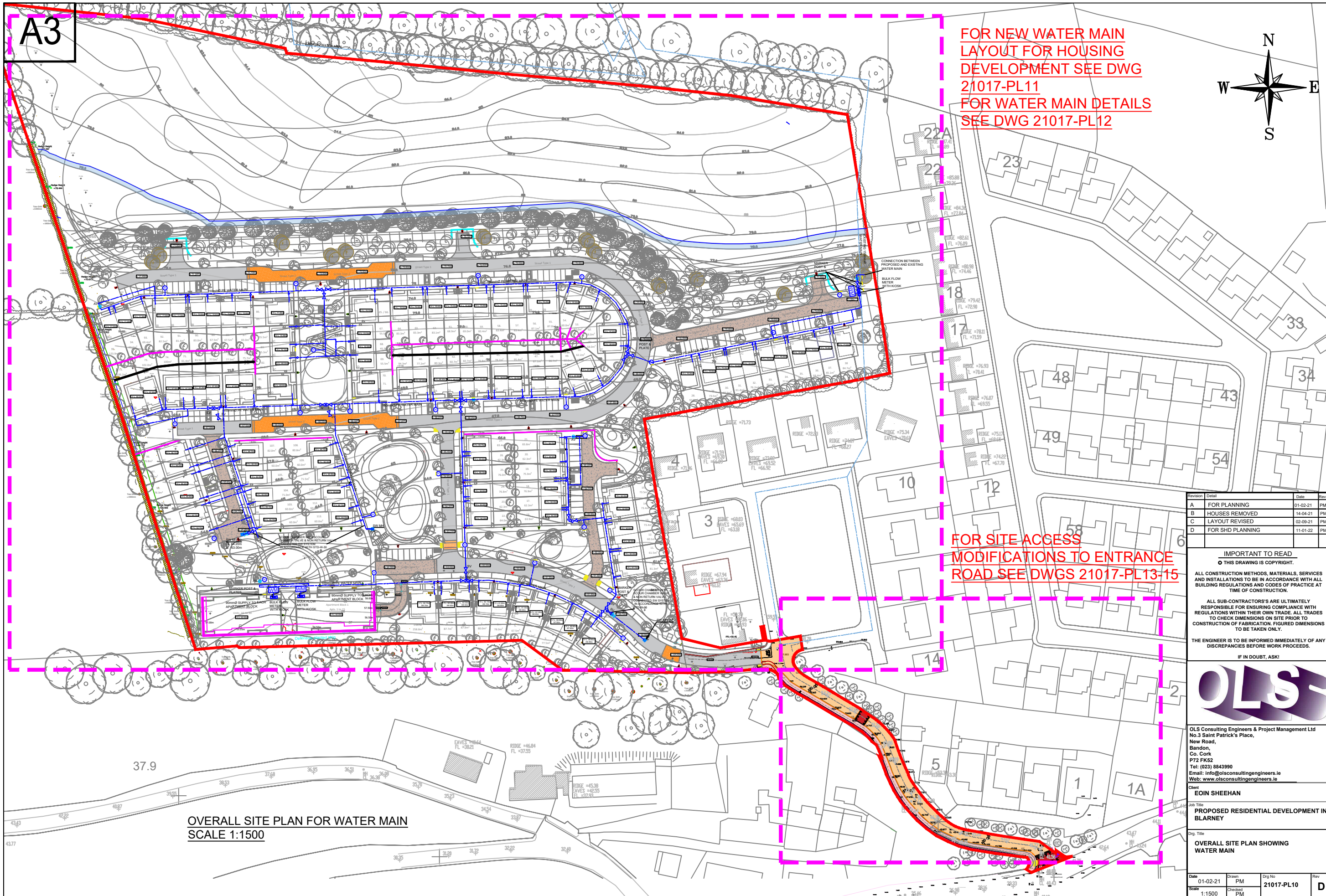
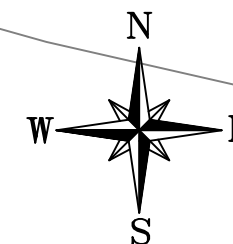


A3

FOR NEW WATER MAIN
LAYOUT FOR HOUSING
DEVELOPMENT SEE DWG
21017-PL11
FOR WATER MAIN DETAILS
SEE DWG 21017-PL12



FOR SITE ACCESS
MODIFICATIONS TO ENTRANCE
ROAD SEE DWGS 21017-PL13-15

OVERALL SITE PLAN FOR WATER MAIN
SCALE 1:1500

Revision	Detail	Date	Rev By
A	FOR PLANNING	01-02-21	PM
B	HOUSES REMOVED	14-04-21	PM
C	LAYOUT REVISED	02-09-21	PM
D	FOR SHD PLANNING	11-01-22	PM

IMPORTANT TO READ
THIS DRAWING IS COPYRIGHT.

ALL CONSTRUCTION METHODS, MATERIALS, SERVICES AND INSTALLATIONS TO BE IN ACCORDANCE WITH ALL BUILDING REGULATIONS AND CODES OF PRACTICE AT TIME OF CONSTRUCTION.

ALL SUB-CONTRACTORS ARE ULTIMATELY RESPONSIBLE FOR ENSURING COMPLIANCE WITH REGULATIONS WITHIN THEIR OWN TRADE. ALL TRADES TO CHECK DIMENSIONS ON SITE PRIOR TO CONSTRUCTION OF FABRICATION. FIGURED DIMENSIONS TO BE TAKEN ONLY.

THE ENGINEER IS TO BE INFORMED IMMEDIATELY OF ANY DISCREPANCIES BEFORE WORK PROCEEDS.

IF IN DOUBT, ASK!



OLS Consulting Engineers & Project Management Ltd
No.3 Saint Patrick's Place,
New Road,
Bandon,
Co. Cork
P72 FK52
Tel: (023) 8843990
Email: info@olsconsultingengineers.ie
Web: www.olsconsultingengineers.ie

Client
EIOIN SHEEHAN

Job Title
PROPOSED RESIDENTIAL DEVELOPMENT IN BLARNEY

Dwg. Title
OVERALL SITE PLAN SHOWING WATER MAIN

Date	Drawn	Dwg No	Rev
01-02-21	PM	21017-PL10	D
Scale	Checked		
1:1500	PM		